

Pipes / Sliding Sleeves

PRINETO pipes are made exclusively of cross-linked polyethylene, and are therefore ensuring high ageing resistance and thus a continuously leak-proof connection without additional sealing materials.

PRINETO pipes are available as flexible and deflection resistant PE-X pipes. The flexible **PRINETO** PE-X/Nanoflex pipes are suitable in particular for laying in storeys, whereas the deflection-resistant **PRINETO** Rigid pipes, because of their lesser linear expansion, are rather used in exposed situations, e.g. in cellars or as risers and show processing advantages.

Flexible **PRINETO** PE-X pipes are available with an outside diameter in the range between 14 mm and 32 mm (DN 12-25). **PRINETO** Rigid pipes, multilayer compound pipes with a basic pipe of cross-linked polyethylene, a laser butt-welded aluminium coating and a PE cover layer, are available in the dimensions between 14 and 63 mm outside diameter (DN 10-50).

The flexible **PRINETO** PE-X Plumbing pipes (black), the flexible **PRINETO** Nanoflex universal pipes (refined steel coloured), and the **PRINETO** Rigid pipes (white) are suitable for use in drinking water piping systems (s. chapter 3).

These pipes comply with the KTW recommendations of the German Federal Health Office and the requirements of the DVGW worksheet W 270 (microbiological certificate) and are toxicologically and physiologically safe.

The EVOH-sheathed **PRINETO** PE-X heating pipes (red), the flexible **PRINETO** Nanoflex-universal pipes (high-grade steel-coloured) and **PRINETO** rigid pipes (white) are suitable for the heating installation (see chapter 4). **PRINETO** rigid pipes and **PRINETO** Nanoflex-pipes are completely oxygen-impervious.

PRINETO heating pipes (red) are oxygen-impervious acc. to DIN 4726.

The **PRINETO** PE-X Surface heating pipes (grey), measuring 17x2.0, highly flexible **PRINETO** Surface heating pipes (light grey), measuring 14x2.0, 17x2.0, 20x2.0, and 25x2.3, highly flexible **PRINETO** Nanoflex surface heating pipes (refined-steel coloured), 17x2.0, and **PRINETO** Rigid pipes, 14x2.0 and 16x2.0, are available for the installation of surface heating systems. For the installation of the **PRINETO** Dry floor heating system the **PRINETO** Rigid pipe 16 has to be used exclusively.

Special requests concerning the manufacture of individual pipe measurements and bundle lengths for industrial use should be directed to IVT. For manufacturing standards and technical descriptions s. chapter 7 „Pipes“.

Highlights:

PRINETO Pipes

- Cross-linked polyethylene
- Extremely long durability compared to PE-RT, corrosion-resistant
- DIN-tested and approved by European testing organisations
- Nanoflex: the first patent-protected 100% oxygen impervious PE-X pipe worldwide
- Nanoflex is UV-resistant
- Flexible and rigid pipes can be used with the same kind of fitting.

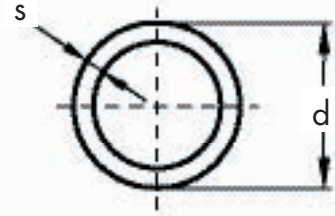


Pipes / Sliding Sleeves

Nanoflex pipe

Flexible universal pipe with 100% oxygen impervious and UV-resistant Nano-metal surface for sanitation and heating systems, cross-linked polyethylene PE-X in accordance with DIN 16892/16893 pipe series S 3.2, approved in accordance with DVGW worksheet W 544, application classes 1, 4, and 5, in accordance with DIN EN ISO 15875-1, ÖVGW, and other country approvals, pressing with brass-coloured sliding sleeve, by bundles or rods.

Colour: refined steel.

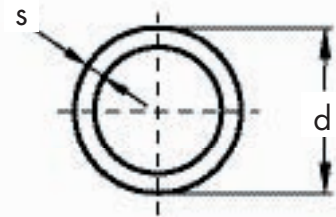


Description	d	s	DN	Weight	Art.-No.	Pack
	mm	mm		kg/m		Qty/m
Nanoflex 16 bundle 120 m	16	2,2	12	0,098	878 110 100	120
Nanoflex 16 bundle 240 m	16	2,2	12	0,098	878 110 101	240
Nanoflex 16 bundle 600 m	16	2,2	12	0,098	878 110 102	600
Nanoflex 16 rod 4 m	16	2,2	12	0,098	878 210 100	160
Nanoflex 20 bundle 120 m	20	2,8	15	0,153	878 110 200	120
Nanoflex 20 rod 4 m	20	2,8	15	0,153	878 210 200	100
Nanoflex 25 bundle 50 m	25	3,5	20	0,238	878 110 300	50
Nanoflex 25 rod 4 m	25	3,5	20	0,238	878 210 300	60
Nanoflex 32 bundle 25 m	32	4,4	25	0,382	878 110 400	25
Nanoflex 32 rod 4 m	32	4,4	25	0,382	878 210 400	40

Nanoflex surface heating pipe, highly flexible

Highly flexible surface heating pipe with 100% oxygen impervious and UV-resistant Nano-metal surface, cross-linked polyethylene PE-MDX in accordance with DIN 16894, application class 4, acc. to DIN 4724, dimension class C, acc. to DIN 4724, surface heating pipe 17, pressing with silver sliding sleeve 16, surface heating pipe 17, pressing with brass-coloured sliding sleeve, by bundles.

Colour: refined steel.



Pipe bundle measurements

Dimension	AD (mm)	ID (mm)	bundle breadth (mm)
14x2, 240m	800	540	190
14x2, 600m	800	480	400
17x2, 120m	800	550	158
17x2, 240m	800	480	245
17x2, 600m	850	550	541

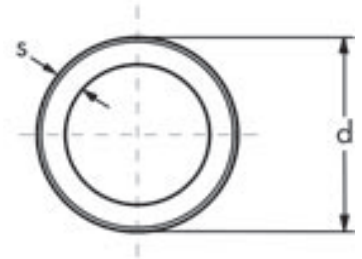
Description	d	s	Weight	Art.-No.	Pack
	mm	mm	kg/m		Qty/m
Nanoflex surface heating pipe	14	2	0,086	878 111 231	240
Nanoflex surface heating pipe	14	2	0,086	878 111 232	600
Nanoflex surface heating pipe	17	2	0,104	878 111 250	120
Nanoflex surface heating pipe	17	2	0,104	878 111 251	240
Nanoflex surface heating pipe	17	2	0,104	878 111 252	600

Rigid pipe

PRINETO Rigid pipe,

Multilayer compound pipe, approved acc. to DVGW worksheet W 542, basic pipe of cross-linked polyethylene PE-X in accordance with DIN 16892/16893, pipe series S 3.2, with aluminium foil, laser butt-welded and outer PE cover layer, oxygen impervious acc. to DIN 4726, application classes 1, 4, and 5, in accordance with DIN EN ISO 15875-1, ÖVGW, and other country approvals, pressing with silver sliding sleeve, by bundles or rods.

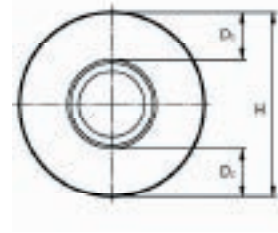
Colour: white.



Description	d	s	DN	Weight	Art.-No.	Pack
	mm	mm		kg/m		Qty/m
Rigid pipe 14 bundles	14	2,0	10	0,126	878 520 080	100
Rigid pipe 16 bundles	17	2,8	12	0,144	878 520 100	100
Rigid pipe 16 4 m rod	17	2,8	12	0,144	878 620 100	120
Rigid pipe 20 bundles	21	3,4	15	0,211	878 520 200	100
Rigid pipe 20 4 m rod	21	3,4	15	0,211	878 620 200	80
Rigid pipe 25 bundles	26	4,0	20	0,308	878 520 300	50
Rigid pipe 25 4 m rod	26	4,0	20	0,308	878 620 300	50
Rigid pipe 32 4 m rod	33	4,9	25	0,477	878 620 400	36
Rigid pipe 40 4 m rod	42	4,6	32	1,680	878 620 500	20
Rigid pipe 50 4 m rod	52	5,65	40	0,960	878 620 600	12
Rigid pipe 63 4 m rod	63	6,0	50	1,302	878 620 700	4

Rigid pipe, with concentric insulation

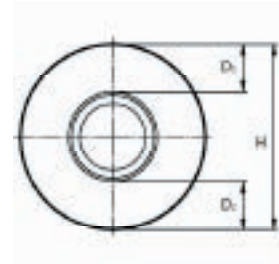
PRINETO Rigid pipe with concentric insulation acc. to EnEV, multilayer compound pipe, approved in accordance with DVGW worksheet W 542, basic pipe of cross-linked polyethylene PE-X in accordance with DIN 16892/16893, pipe series S 3.2, with aluminium foil laser butt-welded and outer PE cover layer, oxygen impervious acc. to DIN 4726, application classes 1, 4, and 5, acc. to DIN EN ISO 15875-1, ÖVGW and other country approvals, pressing with silver sliding sleeve, enclosed by closed-cell polyethylene (WLG 040) with tough PE outer skin. Colour pipe: white, by bundles 50 m
Colour insulation: blue



Description	H	D ₁	D ₂	DN	Art.-No.	Pack
						Qty/m
Rigid pipe 16 - 5mm	27	5	5	12	878 528 105	50
Rigid pipe 20 - 5mm	31	5	5	15	878 528 205	50
Rigid pipe 25 - 5mm	36	5	5	20	878 528 305	50

Rigid pipe, with concentric insulation

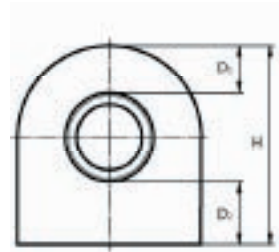
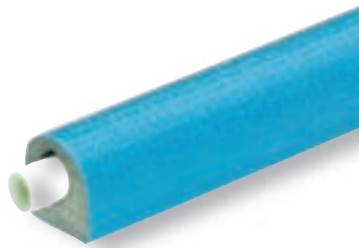
PRINETO Rigid pipe with concentric insulation acc. to EnEV, multilayer compound pipe, approved in accordance with DVGW worksheet W 542, basic pipe of cross-linked polyethylene PE-X in accordance with DIN 16892/16893, pipe series S 3.2, with aluminium foil laser butt-welded and outer PE cover layer, oxygen impervious acc. to DIN 4726, application classes 1, 4, and 5, acc. to DIN EN ISO 15875-1, ÖVGW and other country approvals, pressing with silver sliding sleeve, enclosed by closed-cell polyethylene (WLG 040) with tough PE outer skin. Colour pipe: white, by bundles 50 m
Colour insulation: red



Description	H	D ₁	D ₂	DN	Art.-No.	Pack Qty/m
Rigid pipe 16 - 9mm	35	9	9	12	878 528 109	50
Rigid pipe 20 - 9mm	39	9	9	15	878 528 209	50
Rigid pipe 25 - 9mm	44	9	9	20	878 528 309	50

Rigid pipe, with eccentric insulation

PRINETO Rigid pipe with eccentric insulation acc. to EnEV, multilayer compound pipe, approved in accordance with DVGW worksheet W 542, basic pipe of cross-linked polyethylene PE-X in accordance with DIN 16892/16893, pipe series S 3.2, with aluminium foil laser butt-welded and outer PE cover layer, oxygen impervious acc. to DIN 4726, application classes 1, 4, and 5, acc. to DIN EN ISO 15875-1, ÖVGW and other country approvals, pressing with silver sliding sleeve, enclosed by closed-cell polyethylene (WLG 040) with tough PE outer skin. Colour pipe: white
Colour insulation: blue



Description	H	D ₁	D ₂	DN	Weight	Art.-No.	Pack Qty/m
	mm	mm	mm		kg/m		
Rigid pipe 16 - 50%	39	5	13	12	0,210	878 528 150	50
Rigid pipe 20 - 50%	43	5	13	15	0,270	878 528 250	50
Rigid pipe 16 - 100%	52	7	26	12	0,250	878 528 100	50
Rigid pipe 20 - 100%	56	7	26	15	0,400	878 528 200	50

PE-X Plumbing pipe in pipe

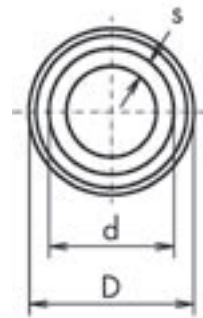
PRINETO Plumbing pipe in pipe

Interior pipe (water-conveying): cross-linked polyethylene PE-X in accordance with DIN 16892/16893, pipe series S 3.2, approved acc. to DVGW worksheet W 544, application class 1, in accordance with DIN EN ISO 15875-1, ÖVGW, and other country approvals, pressing with brass-coloured sliding sleeve.

Colour: black

Outer pipe: corrugated pipe 20/24 of PE

Colour: black



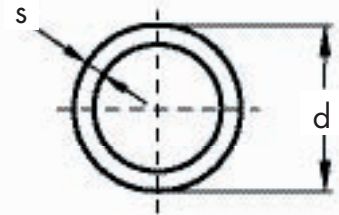
Description	D	d	s	DN	Weight	Art.-No.	Pack Qty/m
	mm	mm	mm		kg/m		
Plumbing pipe 16 in pipe 25	25	16	2,2	12	0,173	878 619 100	50
Plumbing pipe 20 in pipe 29	29	20	2,8	15	0,245	878 619 200	50

PE-X Plumbing pipe

PRINETO Plumbing pipe

Cross-linked polyethylene PE-X in accordance with DIN 16892/16893, pipe series S 3.2, approved acc. to DVGW worksheet W 544, application class 1, in accordance with DIN EN ISO 15875-1, ÖVGW, and other country approvals, pressing with brass-coloured sliding sleeve.

Colour: black

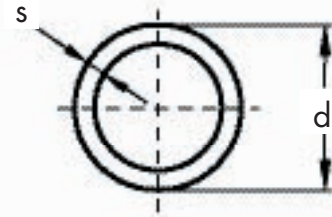


Description	d	s	DN	Weight	Art.-No.	Pack Qty/m
	mm	mm		kg/m		
Plumbing pipe 16 bundles	16	2,2	12	0,098	878 510 100	100
Plumbing pipe 16 4 m rod	16	2,2	12	0,098	878 610 100	160
Plumbing pipe 20 bundles	20	2,8	15	0,153	878 510 200	100
Plumbing pipe 20 4 m rod	20	2,8	15	0,153	878 610 200	100
Plumbing pipe 25 bundles	25	3,5	20	0,238	878 510 300	50
Plumbing pipe 25 4 m rod	25	3,5	20	0,238	878 610 300	60
Plumbing pipe 32 bundles	32	4,4	25	0,382	878 510 400	25
Plumbing pipe 32 4 m rod	32	4,4	25	0,382	878 610 400	40

PE-X Heating pipe

PRINETO Heating pipe, cross-linked polyethylene PE-X in accordance with DIN 16892/16893, pipe series S 3.2, with EVOH-sheathing, oxygen impervious in accordance with DIN 4726, application classes 4 and 5, in accordance with DIN EN ISO 15875-1, pressing with brass-coloured sliding sleeve.

Colour: red



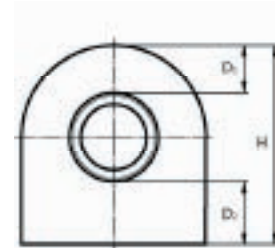
Description	d mm	s mm	DN	Weight kg/m	Art.-No.	Pack Qty/m
Heating pipe 16 bundles	16	2,2	12	0,098	878 310 100	120
Heating pipe 16 4m rod	16	2,2	12	0,098	878 410 100	160
Heating pipe 20 bundles	20	2,8	15	0,153	878 310 200	120
Heating pipe 20 4m rod	20	2,8	15	0,153	878 410 200	100
Heating pipe 25 bundles	25	3,5	20	0,238	878 310 300	50
Heating pipe 25 4 m rod	25	3,5	20	0,238	878 410 300	60
Heating pipe 32 bundles	32	4,4	25	0,382	878 310 400	25
Heating pipe 32 4 m rod	32	4,4	25	0,382	878 410 400	40

Heating pipe, with eccentric insulation

PRINETO Heating pipe with eccentric insulation acc. to EnEV, cross-linked polyethylene PE-X in accordance with DIN 16892/16893, pipe series S 3.2, with EVOH-sheathing, oxygen impervious in accordance with DIN 4726, application classes 4 and 5, in accordance with DIN EN ISO 15875-1, pressing with brass coloured sliding sleeve, enclosed by closed-cell polyethylene (WLG 040) with tough PE outer skin.

Colour pipe: red

Colour insulation: blue



Description	H mm	D ₁ mm	D ₂ mm	DN	Weight kg/m	Art.-No.	Pack Qty/m
Heating pipe 16 50%	39	5	13	12	0,160	878 318 150	50
Heating pipe 20 50%	43	5	13	15	0,215	878 318 250	50
Heating pipe 16 100%	52	7	26	12	0,195	878 318 100	50
Heating pipe 20 100%	56	7	26	15	0,320	878 318 200	50

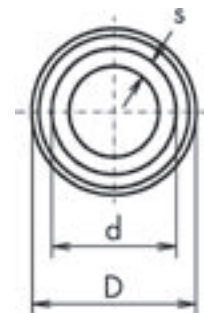
PE-X Heating pipe in pipe

PRINETO Heating pipe in pipe
Interior pipe (water-conveying): cross-linked polyethylene PE-X in accordance with DIN 16892/16893, pipe series S 3.2, with EVOH-sheathing, oxygen impervious acc. to DIN 4726, pressing with brass-coloured sliding sleeve, application classes 4 and 5, acc. to DIN EN ISO 15875-1.

Colour: red

Outer pipe: corrugated pipe 20/24 of PE

Colour: black



Description	D mm	d mm	s mm	DN	Weight kg/m	Art.-No.	Pack Qty/m
Heating pipe 16 in pipe	25	16	2,2	12	0,173	878 319 100	50
Heating pipe 20 in pipe	29	20	2,8	15	0,245	878 319 200	50

Surface heating pipe 17 x 2

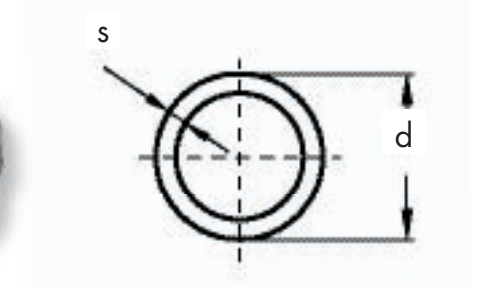
PRINETO Surface heating pipe

Cross-linked polyethylene PE-X in accordance with DIN 16892, with EVOH-sheathing, oxygen impervious in accordance with DIN 4726, application class 4 in accordance with DIN EN ISO 15875-1, dimension class C acc. to DIN EN ISO 15875-2, pressing with silver sliding sleeve 16, by bundles.

Colour: medium grey

Pipe bundle measurements

Dimension	AD (mm)	ID (mm)	bundle breath (mm)
17x2, 120m	800	550	158
17x2, 240m	800	480	245
17x2, 600m	850	550	541



Description	d (mm)	s (mm)	Weight (kg/m)	Art.-No.	Pack Qty/m
Surface heating pipe PE-X 17	17	2,0	0,104	878 311 150	120
Surface heating pipe PE-X 17	17	2,0	0,104	878 311 151	240
Surface heating pipe PE-X 17	17	2,0	0,104	878 311 152	600

Surface heating pipe, highly flexible 17 x 2

PRINETO Surface heating pipe, highly flexible

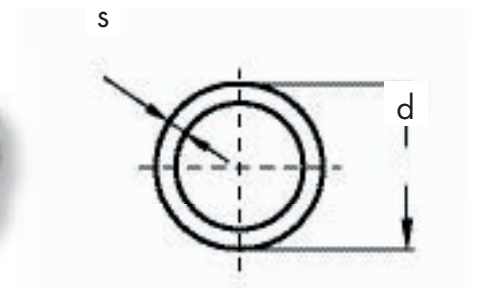
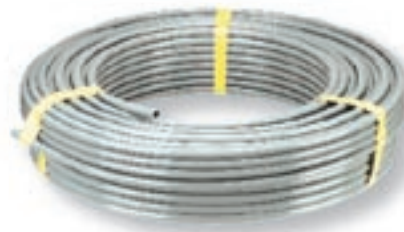
Cross-linked polyethylene PE-MDX in accordance with DIN 16894, with EVOH-sheathing, oxygen impervious in accordance with DIN 4726, application class 4 in accordance with DIN 4724, dimension class C acc. to DIN 4724, by bundles.

Colour: light grey

Pressing 14, 20, 25 with brass-coloured sliding sleeve, pressing 17 with silver sliding sleeve 16.

Pipe bundle measurements

Dimension	AD (mm)	ID (mm)	bundle breath (mm)
14x2, 240m	800	540	190
14x2, 600m	800	480	400
17x2, 120m	800	550	158
17x2, 240m	800	480	245
17x2, 600m	850	550	541
20x2, 240m	860	450	246
25x2,3, 240m	840	480	560



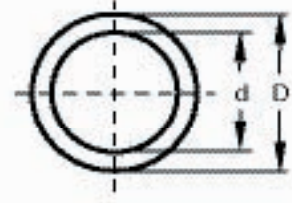
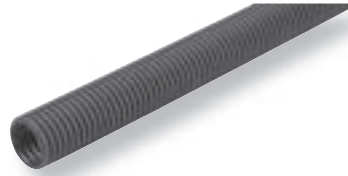
Description	d (mm)	s (mm)	Weight (kg/m)	Art.-No.	Pack Qty/m
Surface heating pipe PE-MDX	14	2,0	0,086	878 311 231	240
Surface heating pipe PE-MDX	14	2,0	0,086	878 311 232	600
Surface heating pipe PE-MDX	17	2,0	0,104	878 311 250	120
Surface heating pipe PE-MDX	17	2,0	0,104	878 311 251	240
Surface heating pipe PE-MDX	17	2,0	0,104	878 311 252	600
Surface heating pipe PE-MDX	20	2,0	0,120	878 311 171	240
Surface heating pipe PE-MDX	25	2,3	0,177	878 311 181	240

Corrugated pipe

PRINETO Corrugated pipe as separate protective pipe for **PRINETO** pipes of the dimensions 16, 17 (corrugated pipe 20) and 20 (corrugated pipe 24), or as electric cable – empty pipe.

Colour: black

Material: Polyethylene



Description	D mm	d mm	Art.-No.	Pack Qty/m
Corrugated pipe 20	25	20	878 317 100	25
Corrugated pipe 24	29	24	878 317 200	25

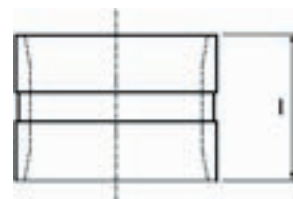
Sliding sleeve for PE-X pipe

PRINETO Sliding sleeve PE-X

For the making of sliding sleeve connections, slideable on both sides, for plumbing, heating, and Nanoflex pipes.

Material: brass, thermally stress relieved

Colour: brass bright



Description	l mm	Weight kg/piece	Art.-No.	Pack Qty/m
Sleeve PE-X 16	15	0,012	878 530 100	100
Sleeve PE-X 20x2,8/2,0	18	0,018	878 530 200	100
Sleeve PE-X 25x3,5/2,3	22	0,030	878 530 300	100
Sleeve PE-X 32	27	0,054	878 530 400	50

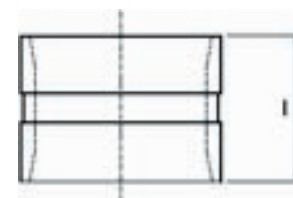
Sliding sleeve for Rigid pipe

PRINETO Sliding sleeve rigid

For the making of sliding sleeve connections, slideable on both sides, for rigid pipe.

Material: brass, thermally stress relieved

Colour: silver nickel-plated



Description	l mm	Weight kg/piece	Art.-No.	Pack. Qty/m
Sleeve rigid 16 / 17x2,0	15	0,014	878 539 100	100
Sleeve rigid 20	18	0,022	878 539 200	100
Sleeve rigid 25	22	0,040	878 539 300	100
Sleeve rigid 32	27	0,060	878 539 400	50
Sleeve rigid 40	32	0,092	878 539 500	10
Sleeve rigid 50	36	0,140	878 539 600	10
Sleeve rigid 63	39	0,293	878 539 700	10

Sliding sleeve for Surface heating pipe

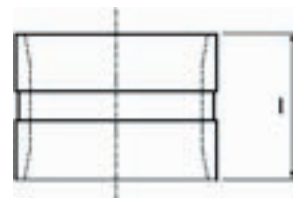
PRINETO Sliding sleeve for the making of sliding sleeve connections, slideable on both sides, for surface heating pipe.

Material: brass, thermally stress relieved

For pipes 17x2.0

Colour: silver nickel-plated

For pipes 14x2.0, 20x2.5, 25x2.3



Description	l mm	Weight kg/piece	Art.-No.	Pack Qty/m
Sleeve 14	15	0,010	878 530 090	100
Sleeve 14	15	0,010	878 530 091	25
Sleeve rigid 16/17x2,0	18	0,012	878 539 100	100
Sleeve PE-X 20x2,8/2,0	22	0,018	878 530 200	100
Sleeve PE-X 25x3,5/2,3	27	0,030	878 530 300	50

PRINETO®